



**MOLLAI**  
COLLECTION

LV23123-ET/LV23223-ET  
END TABLE

---

## ASSEMBLY INSTRUCTIONS



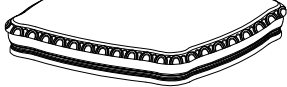
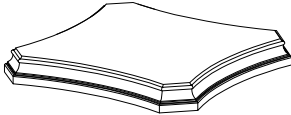

**ASSEMBLY TIPS:**

- 1.Remove hardware from box and sort by size.
- 2.Please check to see that all hardware and parts are present prior to start of assembly.
- 3.Please follow attached instructions in the same sequence as numbered to assure fast & easy assembly.

**Warning!**

1. Don't attempt to repair or modify parts that are broken or defective. Please contact the store immediately.
2. This product is for home use only and not intended for commercial establishment.

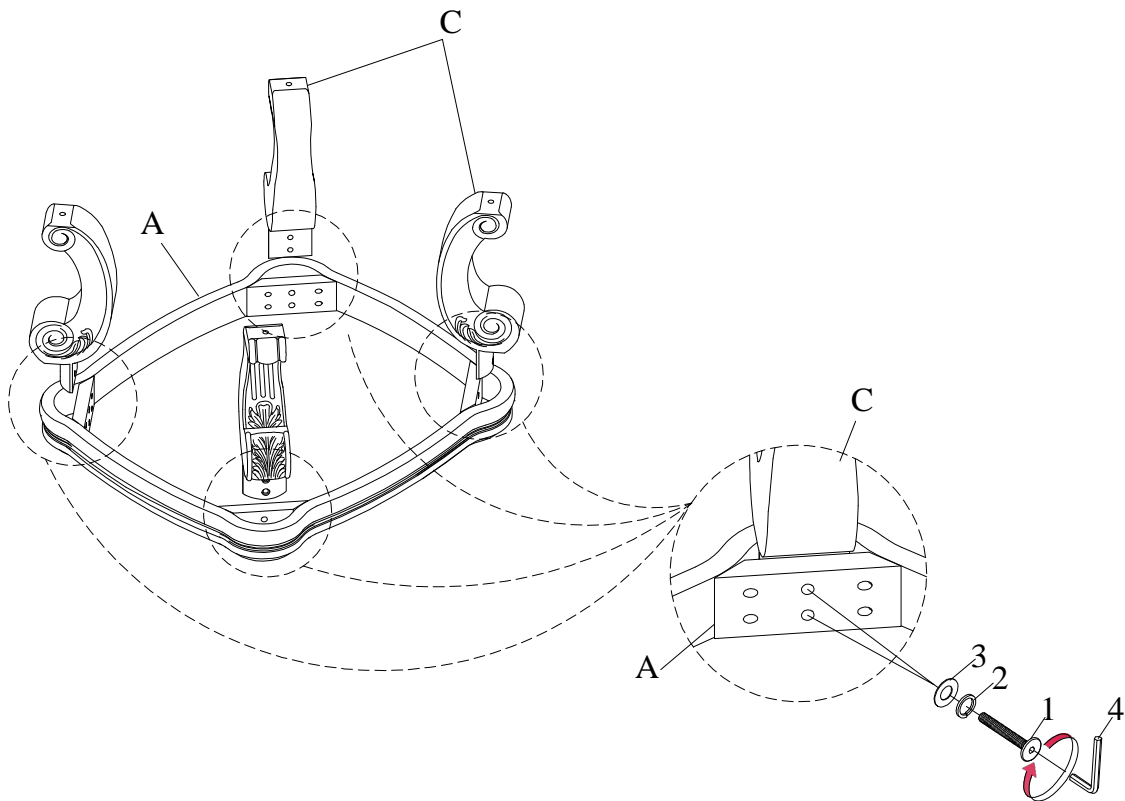
**PARTS IDENTIFICATION**

A		Table top	1PC
B		Base	1PC
C		Table legs	4PCS

**HARDWARE IDENTIFICATION**

1		Bolt	12PCS
2		Lock washer	12PCS
3		Flat washer	12PCS
4		Allen wrench	1PC

STEP 1.



STEP 2.

