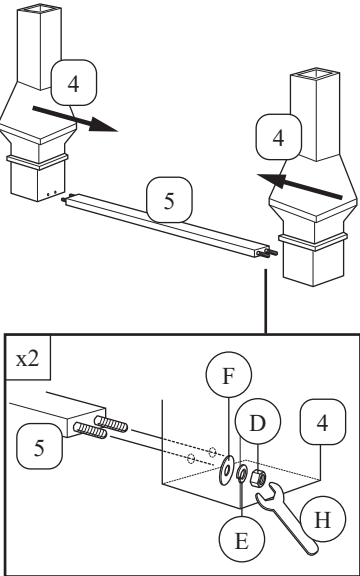


Model: **DM25555**

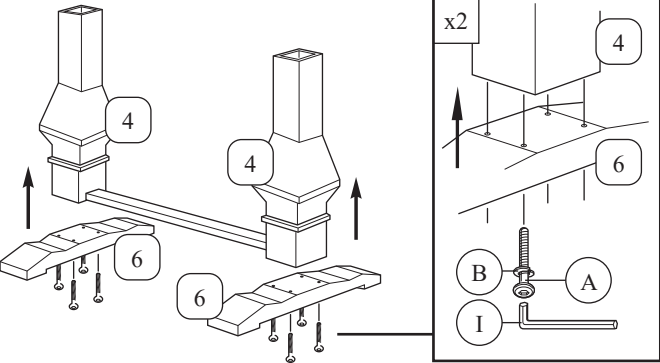
ASSEMBLY INSTRUCTION

Important note: - Place all wooden part on a clean and smooth surface such as rug or carpet to avoid the part from being scratch.
- Please follow the assembly instruction step by step.
- Do not tighten all screw until the table is fully set-up.

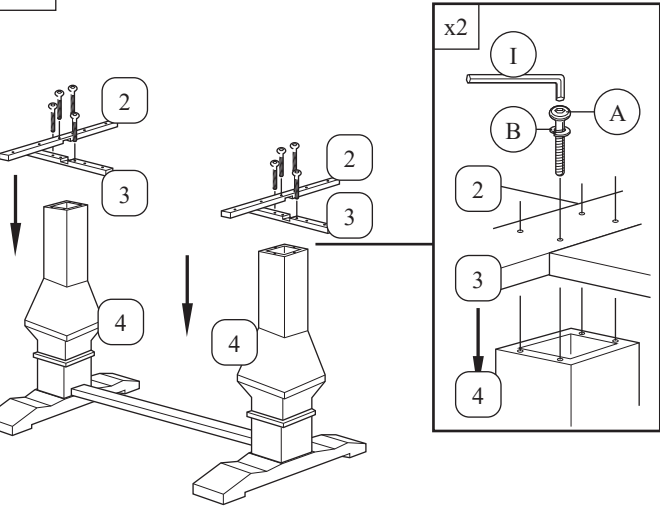
1



2



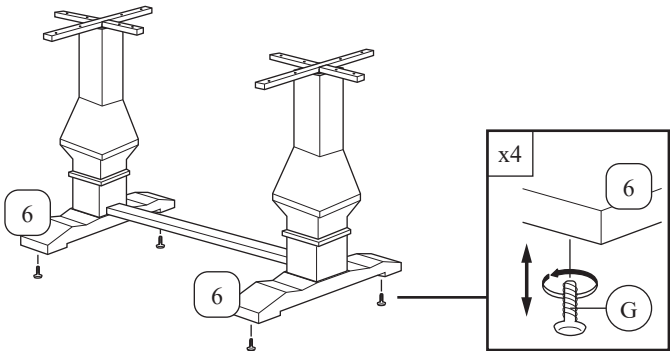
3



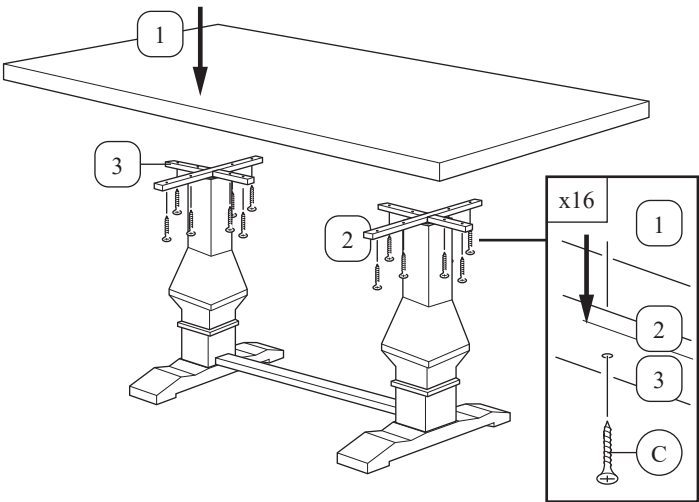
No	Hardware List	Qty.
A	JCBC M6 x 60mm	16 pcs
B	M6 Spring Washer	16 pcs
C	CSK M4 x 32mm	16 pcs
D	Hex Nuts M8	4 pcs
E	M8 Spring Washer	4 pcs
F	M8 Flat Washer	4 pcs
G	Adjuster	4 pcs
H	Spanner 12.8mm	1 pc
I	Allen Key M4	1 pc

No	Part List	Qty.
1	Table Top	1 pc
2	Table Support Long	2 pcs
3	Table Support Short	2 pcs
4	Table Stump	2 pcs
5	Table Center Support	1 pc
6	Table Leg	2 pcs

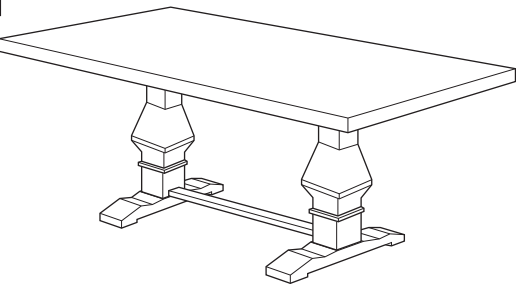
4



5



6



COMPLETED ASSEMBLY