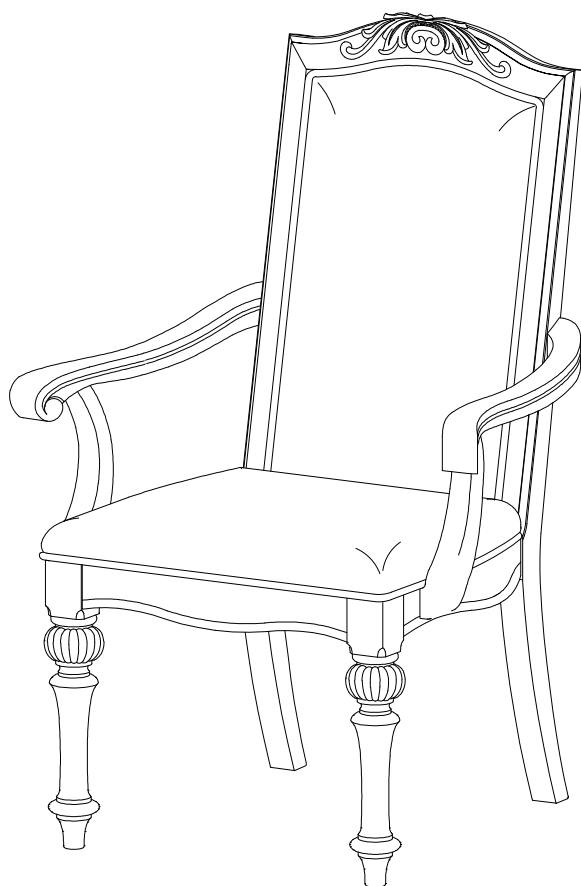




MOLLAI
COLLECTION

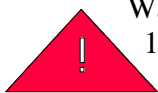
MDV1213/2213-AC
ARM CHAIR

ASSEMBLY INSTRUCTIONS



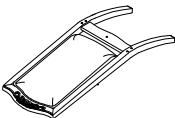
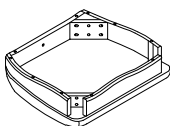
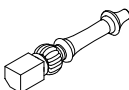


ASSEMBLY TIPS:

- 1.Remove hardware from box and sort by size.
- 2.Please check to see that all hardware and parts are present prior to start of assembly.
- 3.Please follow attached instructions in the same sequence as numbered to assure fast & easy assembly.








**Warning!**

1. Don't attempt to repair or modify parts that are broken or defective. Please contact the store immediately.
2. This product is for home use only and not intended for commercial establishment.

PARTS IDENTIFICATION

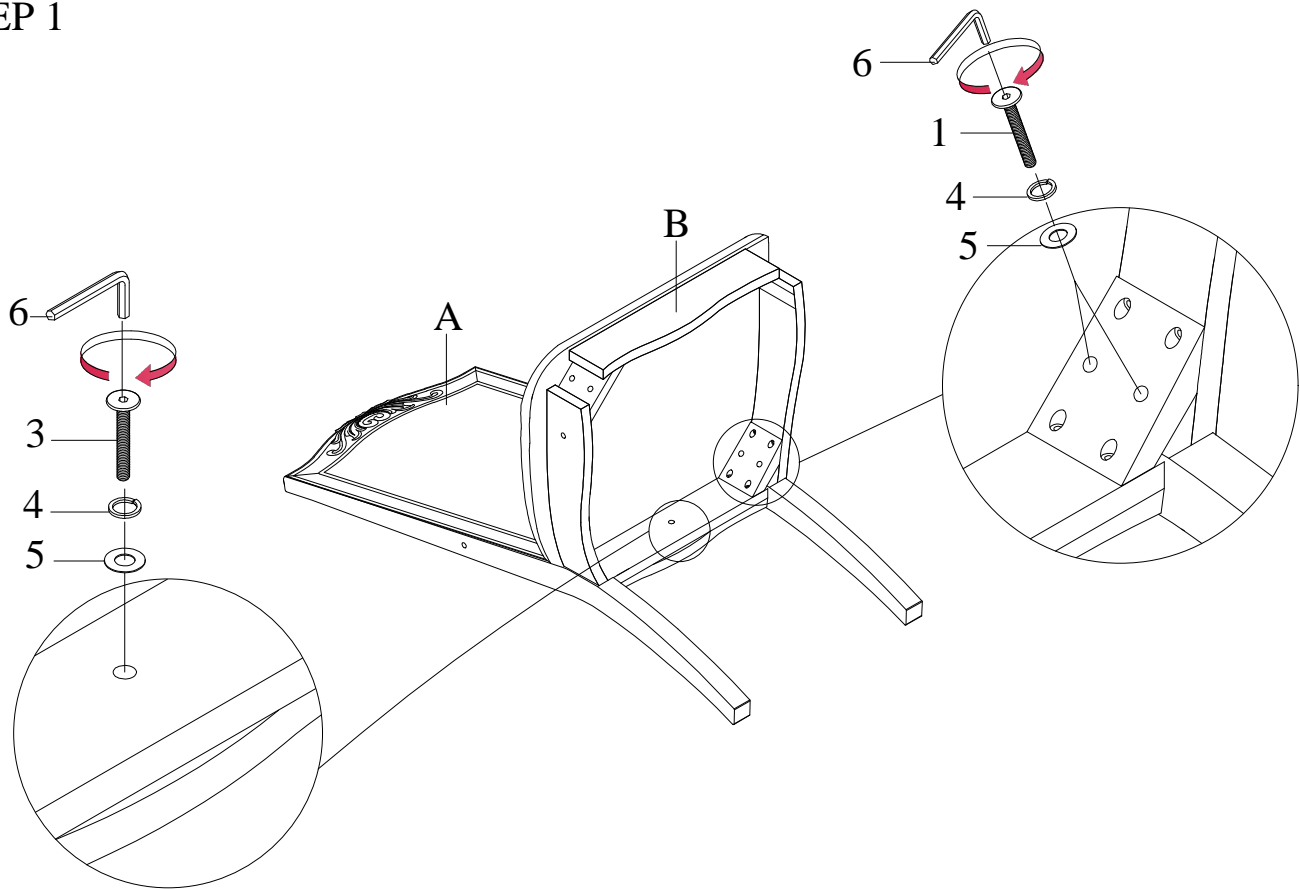
A		Chair Back	1PC
B		Seat	1PC
C		Font Leg	2PCS
D		Right arm	1PC
E		Left arm	1PC

HARDWARE IDENTIFICATION

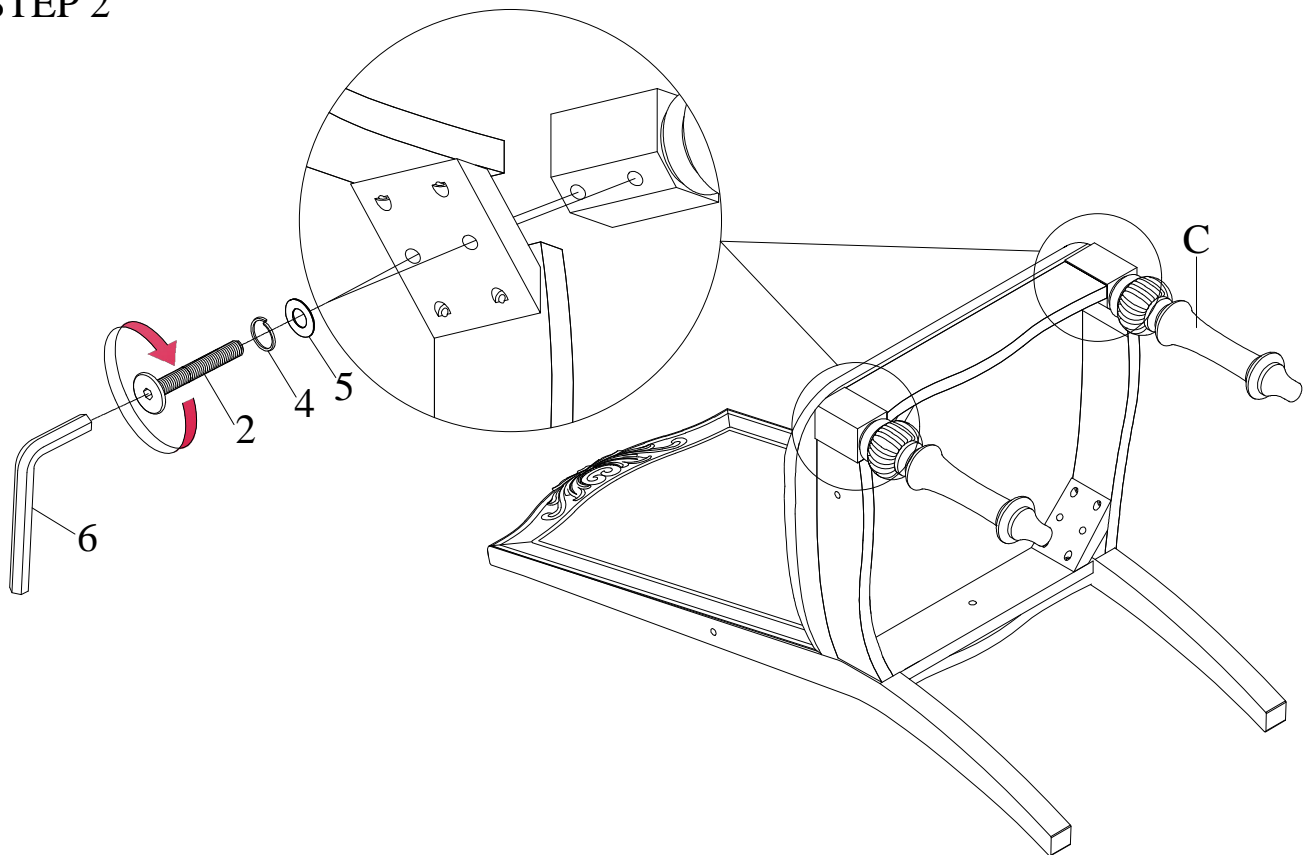
1		Long bolt	4PCS
2		Medium bolt	6PCS
3		Short bolt	1PCS
4		Lock washer	11PCS
5		Flat washer	11PCS
6		Allen wrench	1PCS
7		Screw	2PC

NOTE: -PHILLIPS HEAD SCREW DRIVER IS REQUIRED IN THE ASSEMBLY PROCESS; HOWEVER MANUFACTURER MANUFACTURER DOES NOT PROVIDE THIS ITEM.
-QUANTITIES SHOWN ARE FOR ONE CHAIR

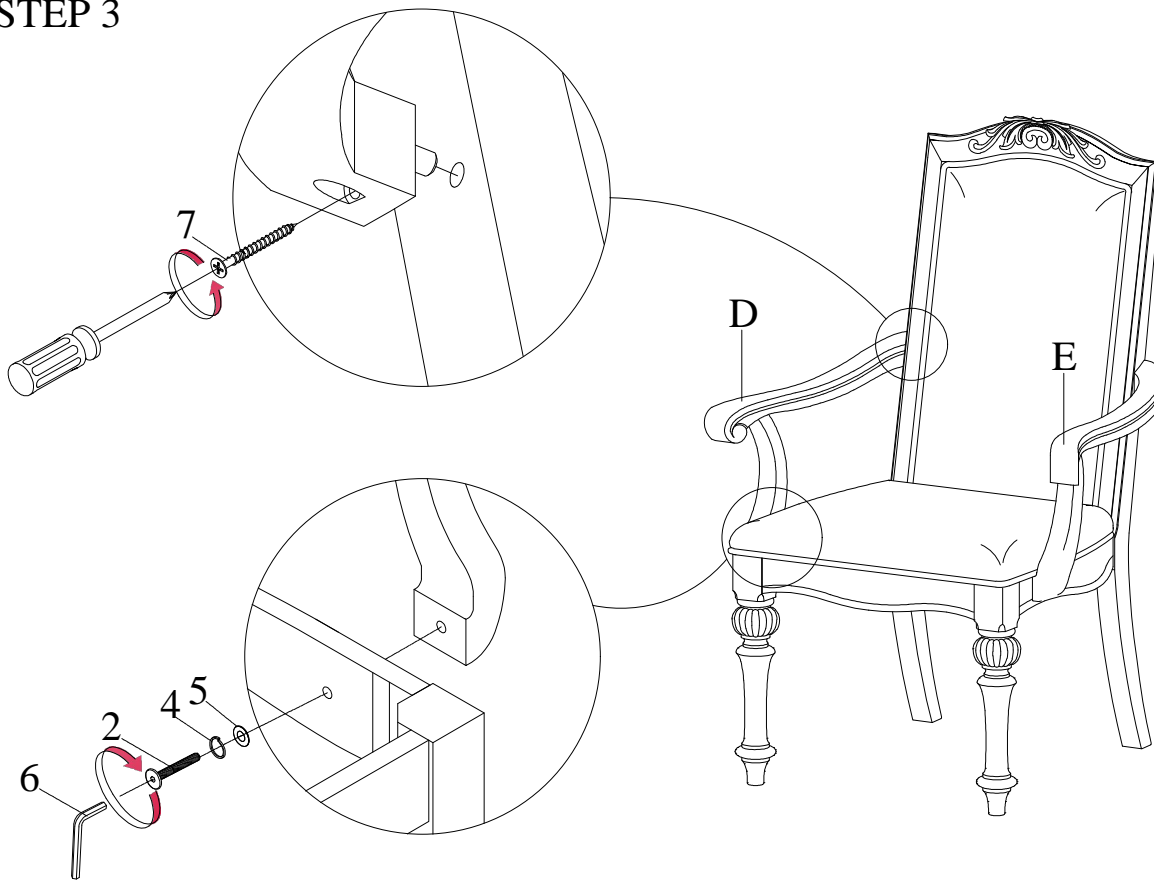
STEP 1



STEP 2



STEP 3



STEP 4
COMPLETE

