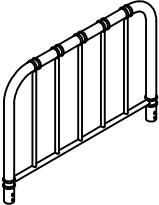
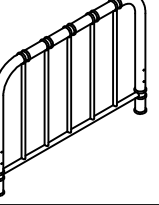
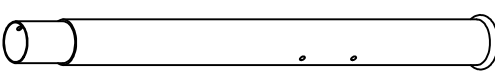
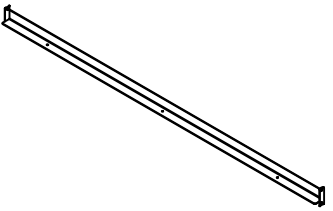

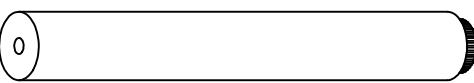


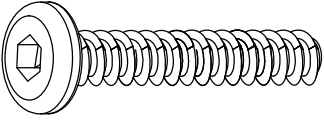
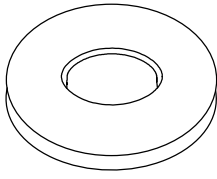
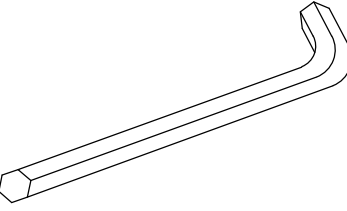
ASSEMBLY INSTRUCTIONS

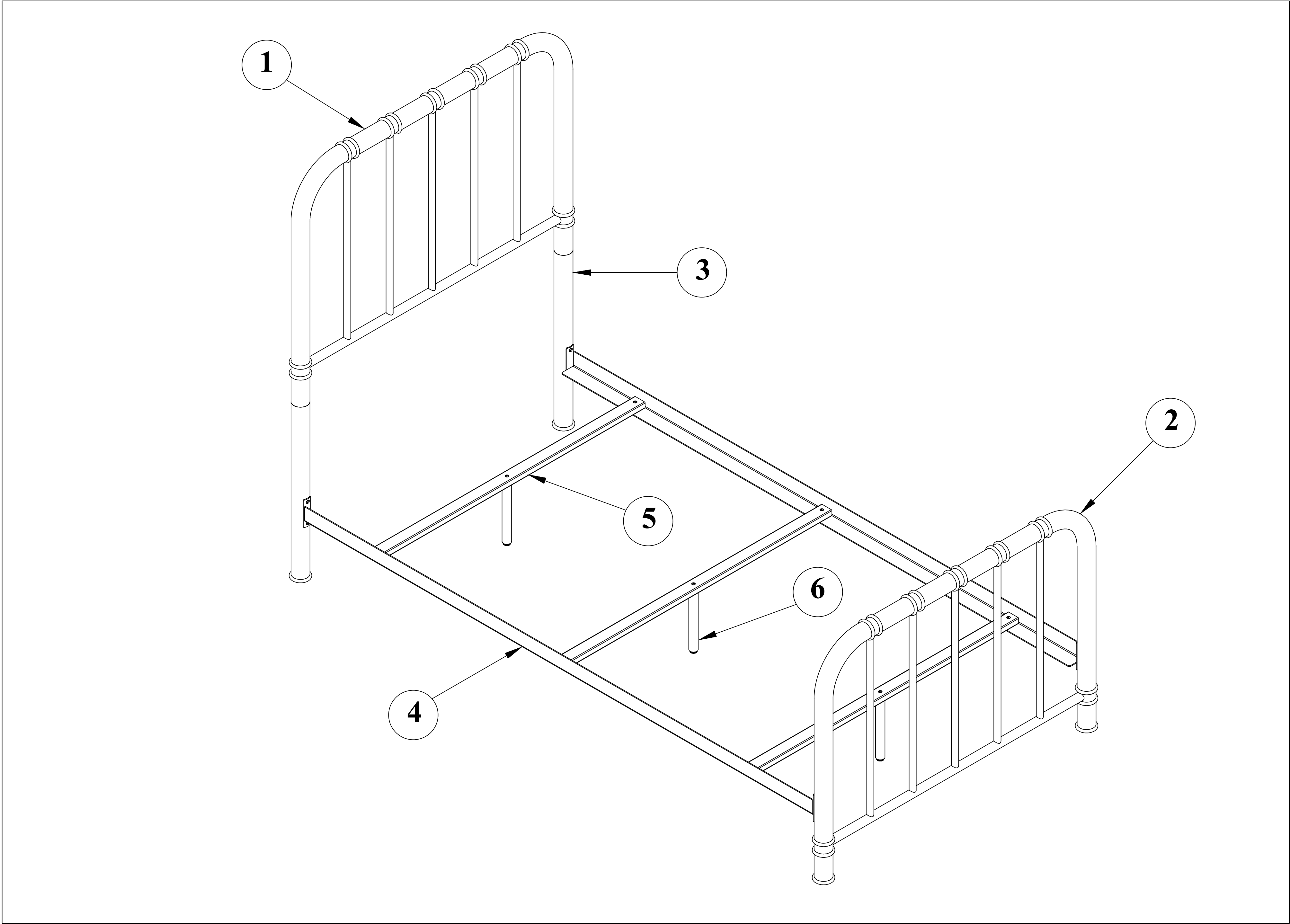
Group No.: 87500 - TRISTEN

Item No.:	87501 - HEAD/FOOTBOARD 3/3 METAL	87521 - HEAD/FOOTBOARD 5/0 METAL
	87502 - RAILS,3/3 METAL BED	87522 - RAILS,5/0 METAL BED
	87511 - HEAD/FOOTBOARD 4/6 METAL	87531 - HEAD/FOOTBOARD 6/6 METAL
	87512 - RAILS,4/6 METAL BED	87532 - RAILS,6/6 METAL BED

Read instructions carefully prior for assembly.
Thank you for purchasing this product. Be sure to check all packing material carefully for small parts that may have come loose inside the carton during shipment. Remove all components from pack and place on soft surface to prevent scratch during assembly. Identify and count all parts as specified below.
It is recommended to use two or more persons during the assembly process.

PARTS LIST			
No.	Description	Sketch	Q'ty
1	Headboard		1pc
2	Footboard		1pc
3	Headboard Post		2pcs
4	Side Rail		2pcs
5	Slat		3pcs
6	Support Leg		3pcs

HARDWARE LIST				
No.	Description	Sketch	Size	Q'ty
A	Allen Bolt		φ1/4" x 32mm	21pcs
B	Flat Washer		φ5/16"x 16mm	21pcs
C	Allen Key		4mm	1pc



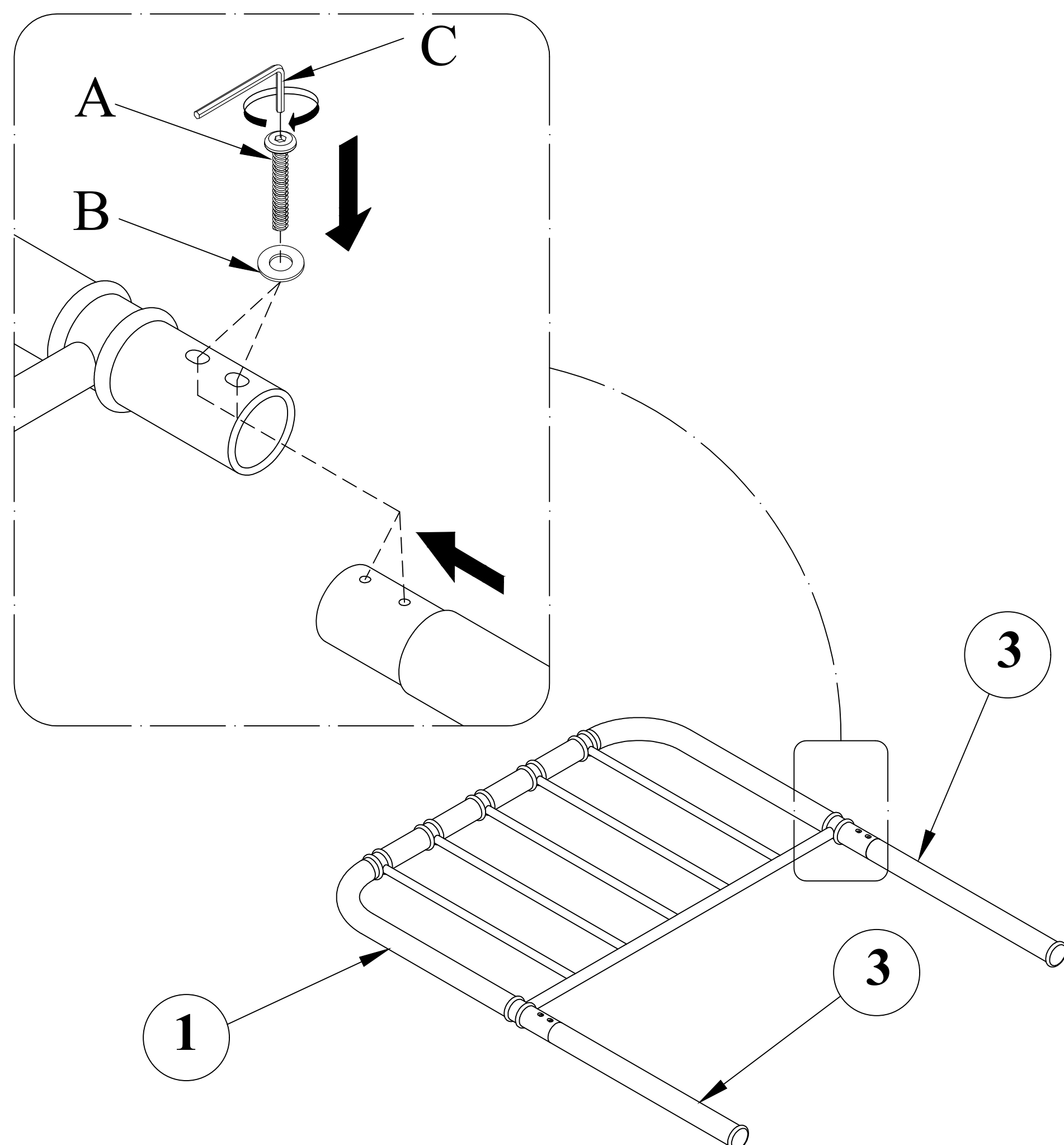
ASSEMBLY INSTRUCTIONS

Group No.: 87500 - TRISTEN

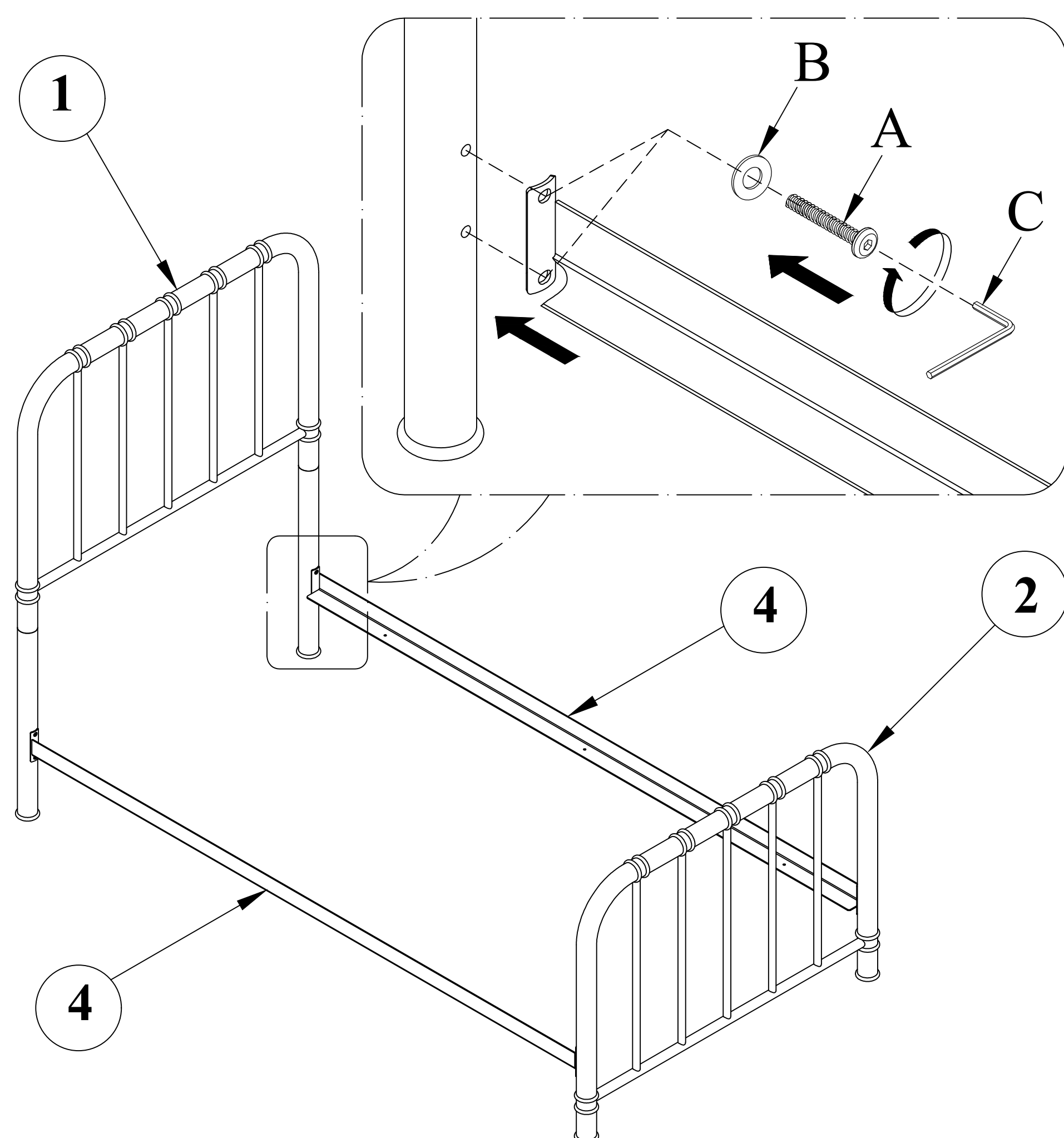
Item No.: 87501 - HEAD/FOOTBOARD 3/3 METAL
87502 - RAILS, 3/3 METAL BED
87511 - HEAD/FOOTBOARD 4/6 METAL
87512 - RAILS, 4/6 METAL BED

87521 - HEAD/FOOTBOARD 5/0 METAL
87522 - RAILS, 5/0 METAL BED
87531 - HEAD/FOOTBOARD 6/6 METAL
87532 - RAILS, 6/6 METAL BED

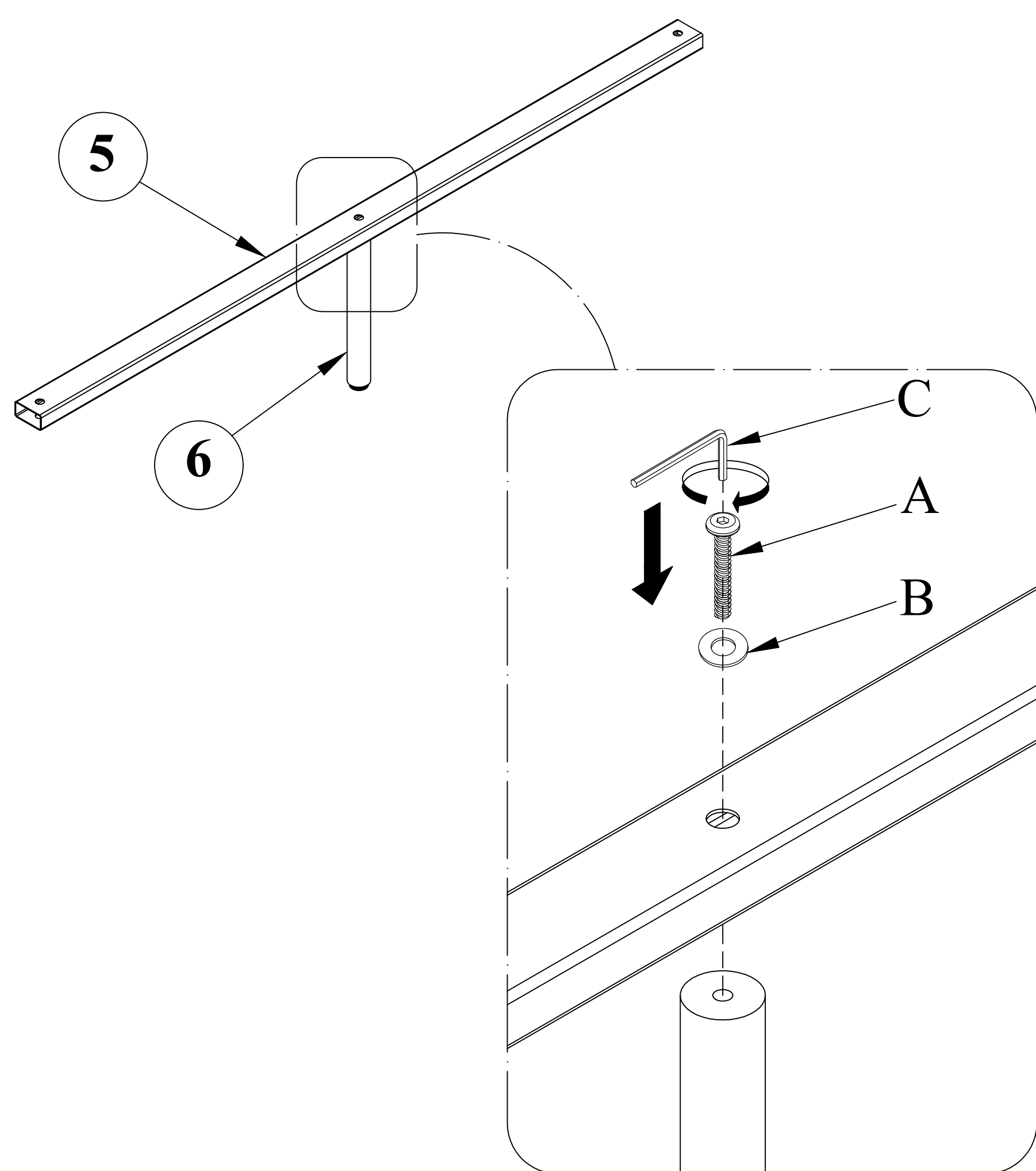
Step 1: Assemble the Headboard Post (3) into Headboard (1) by using Allen Bolts (A), Flat Washers (B) and Allen Key (C).



Step 2: Attach the Side Rails (4) to Headboard (1) and Footboard (2) by using Allen Bolts (A), Flat Washers (B) and Allen Key (C).



Step 3: Attach the Support Leg (6) to the Slat (5) by using Allen Bolt (A), Flat Washer (B) and Allen Key (C).



Step 4: Assemble the Slat (5) to the Side Rail (4) by using Allen Bolt (A), Flat Washer (B) and Allen Key (C).

