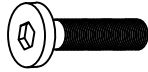
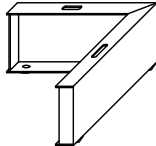
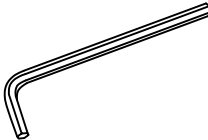
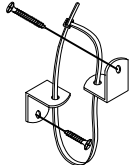



BM22111-CH ASSEMBLY INSTRUCTION

HARDWARES LIST

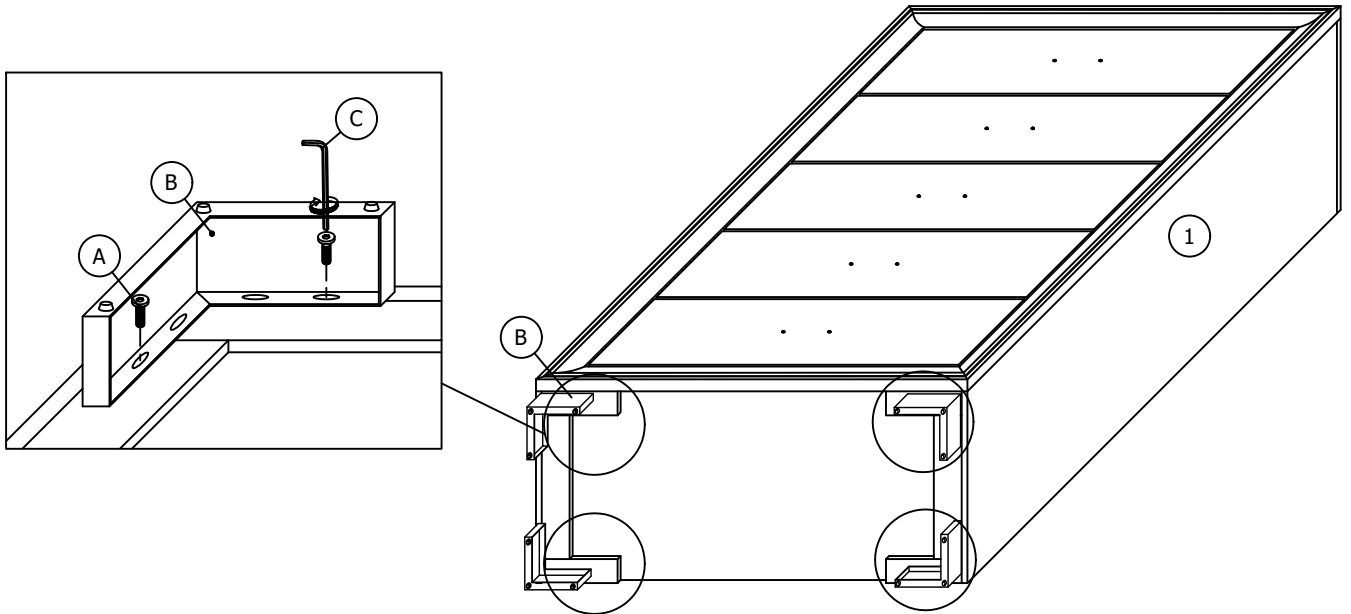
ITEM	DESCRIPTION	DRAWING	QTY
A	JCBC SCREW M6 x 16MM		8 PCS
B	METAL SUPPORT LEG		4 PCS
C	M4 ALLEN KEY (65MM)		1 PC
D	TIPPING RESTRAINT		1 SET

PART LIST

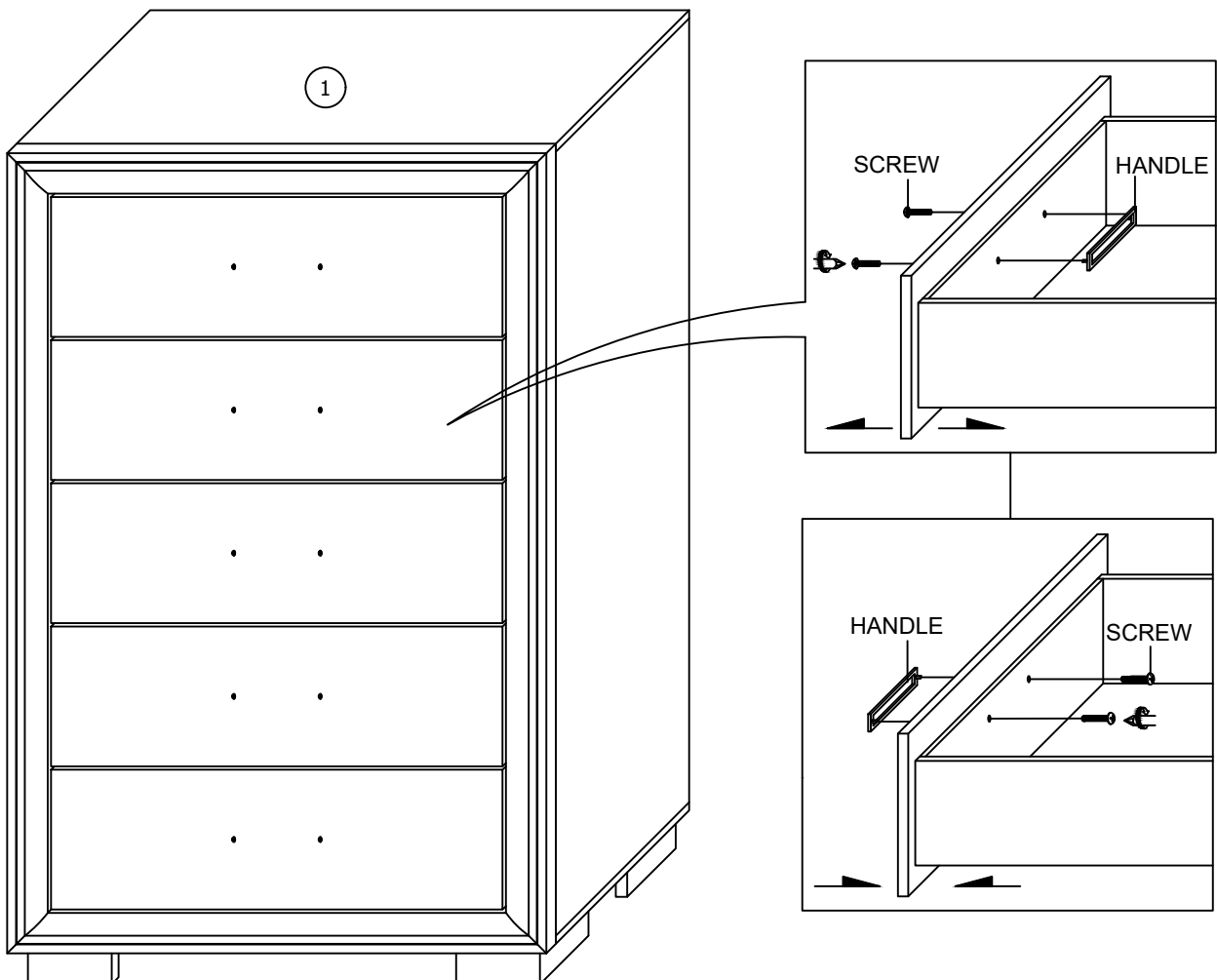
ITEM	DESCRIPTION	DRAWING	QTY
1	CHEST		1 PC

BM22111-CH ASSEMBLY INSTRUCTION

STEP 1

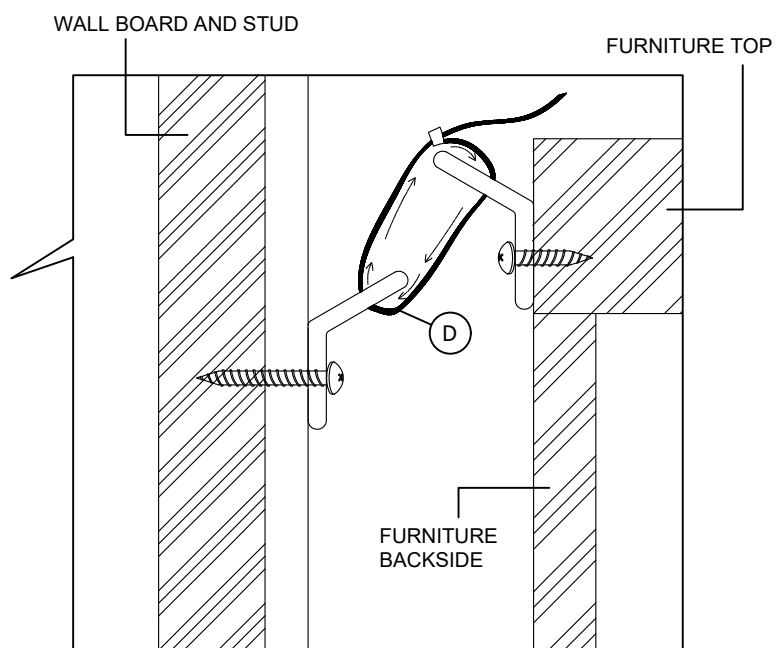
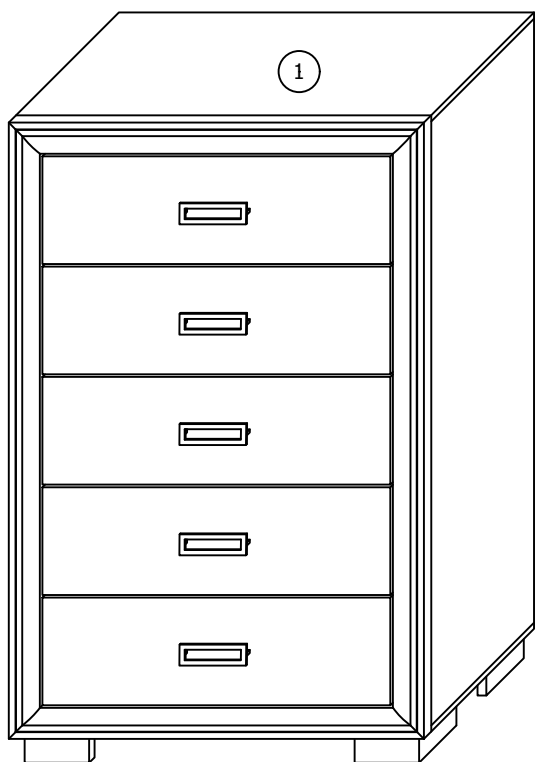


STEP 2

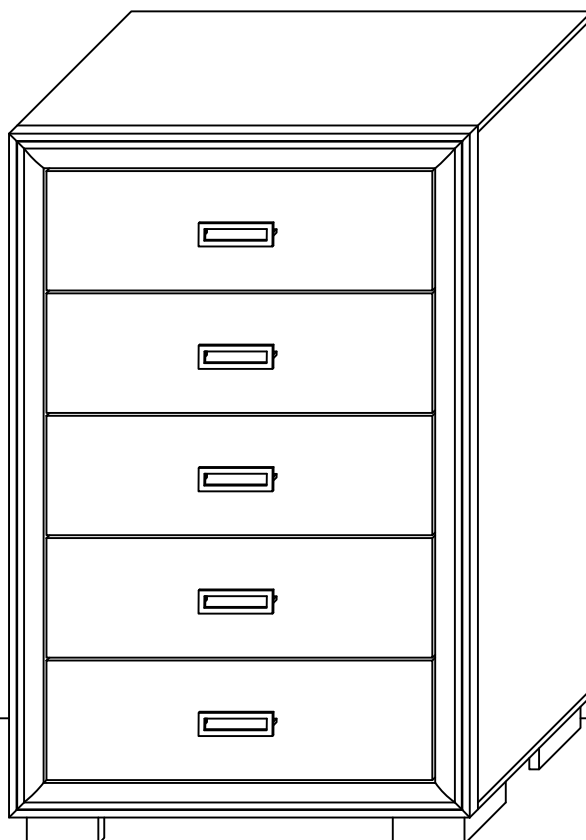


BM22111-CH ASSEMBLY INSTRUCTION

STEP 3



STEP 4



ASSEMBLY COMPLETED