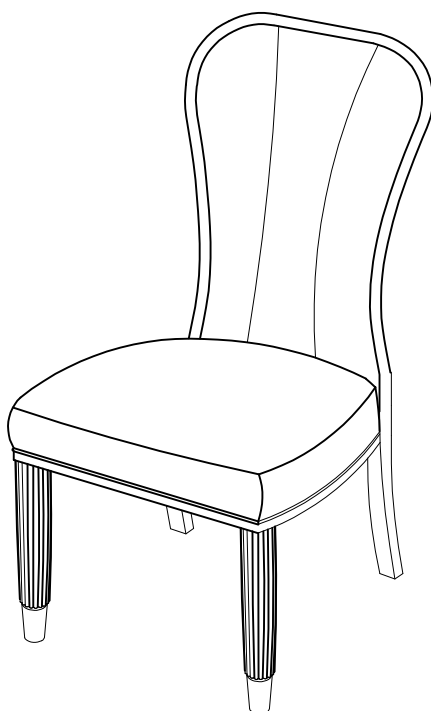




DV25056-SC
SIDE CHAIR

ASSEMBLY INSTRUCTIONS



ASSEMBLY TIPS:


- 1.Remove hardware from box and sort by size.
- 2.Please check to see that all hardware and parts are present prior to start of assembly.
- 3.Please follow attached instructions in the same sequence as numbered to assure fast & easy assembly.

Warning!









- 1. Don't attempt to repair or modify parts that are broken or defective. Please contact the store immediately.
- 2. This product is for home use only and not intended for commercial establishment.

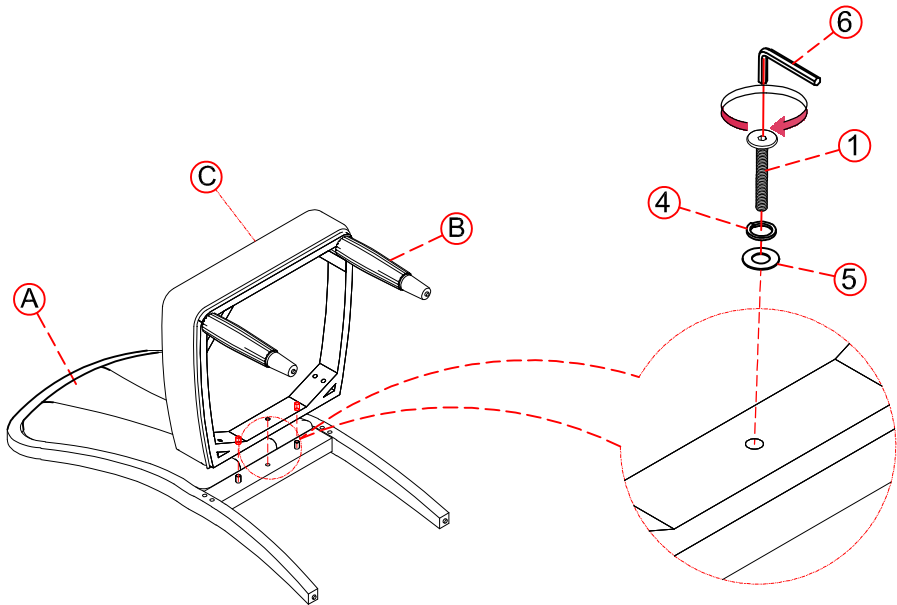
PARTS IDENTIFICATION

A		Chair back	1pc
B		Front legs	2pcs
C		Cushion frame	1pc

HARDWARE IDENTIFICATION

1		Bolt: 5/16"x40mm	1pc
2		Bolt: 5/16"x50mm	4pcs
3		Bolt: 5/16"x75mm	4pcs
4		Lock washer	9pcs
5		Flat washer	9pcs
6		Allen wrench	1pc

STEP 1.



STEP 2.

